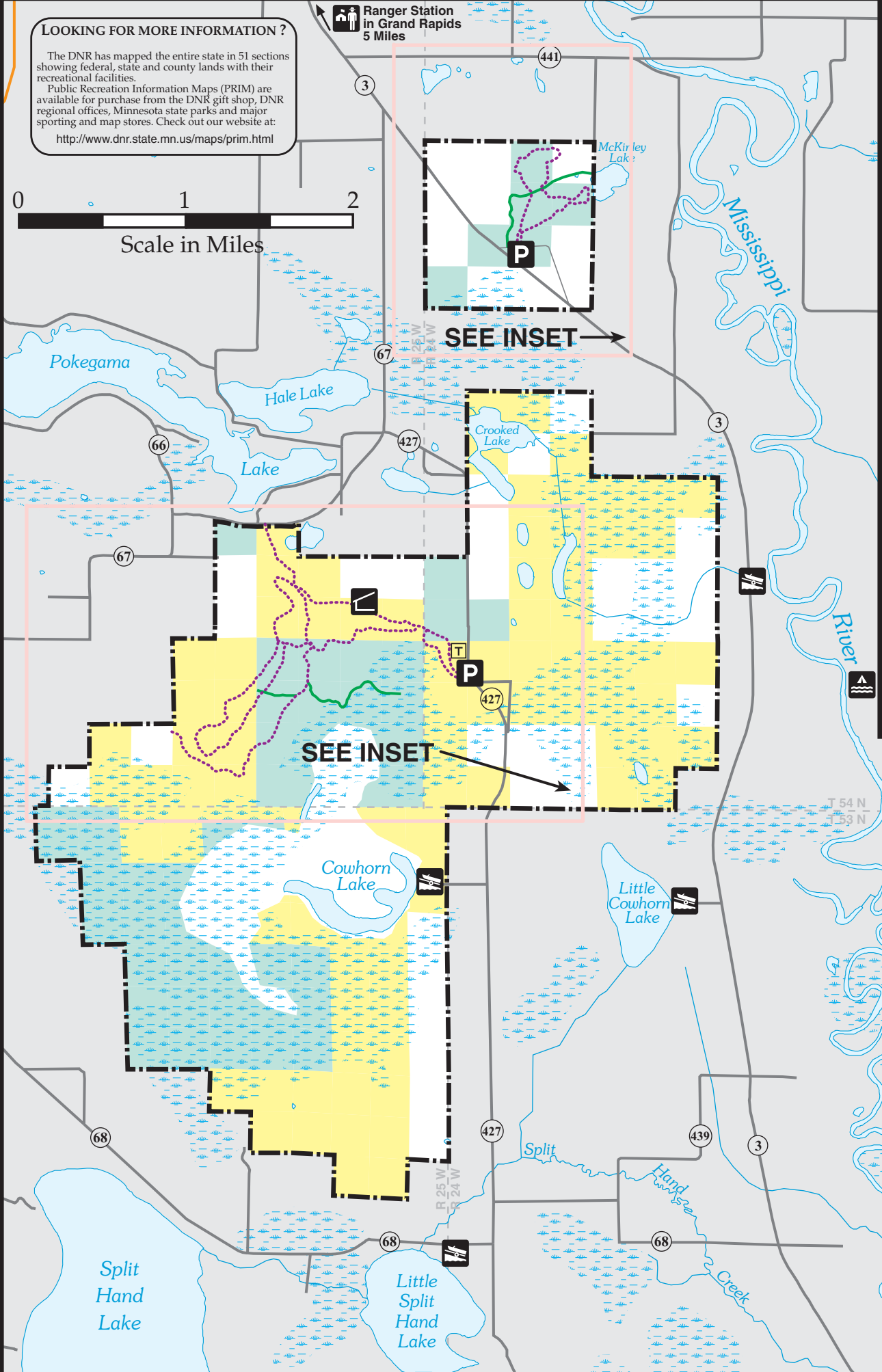
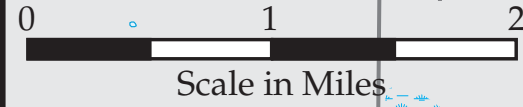


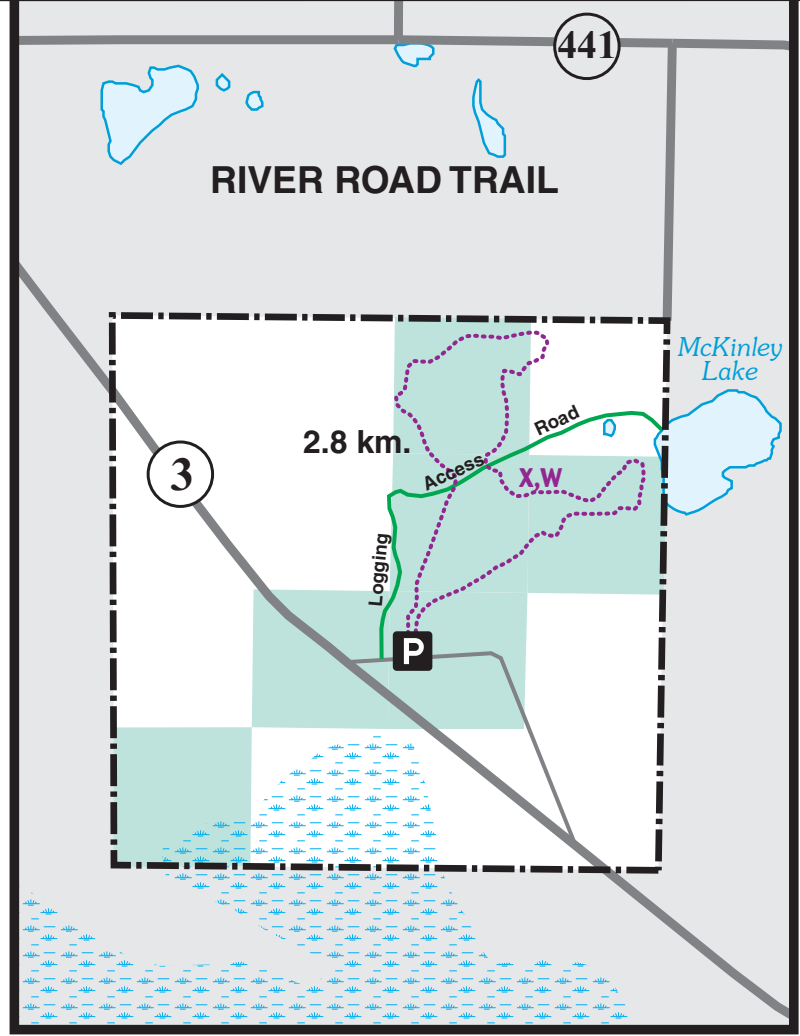
LOOKING FOR MORE INFORMATION ?

The DNR has mapped the entire state in 51 sections showing federal, state and county lands with their recreational facilities.
Public Recreation Information Maps (PRIM) are available for purchase from the DNR gift shop, DNR regional offices, Minnesota state parks and major sporting and map stores. Check out our website at: <http://www.dnr.state.mn.us/maps/prim.html>



SEE INSET →

SEE INSET →



RIVER ROAD TRAIL

2.8 km.

Golden Anniversary State Forest

FACILITIES

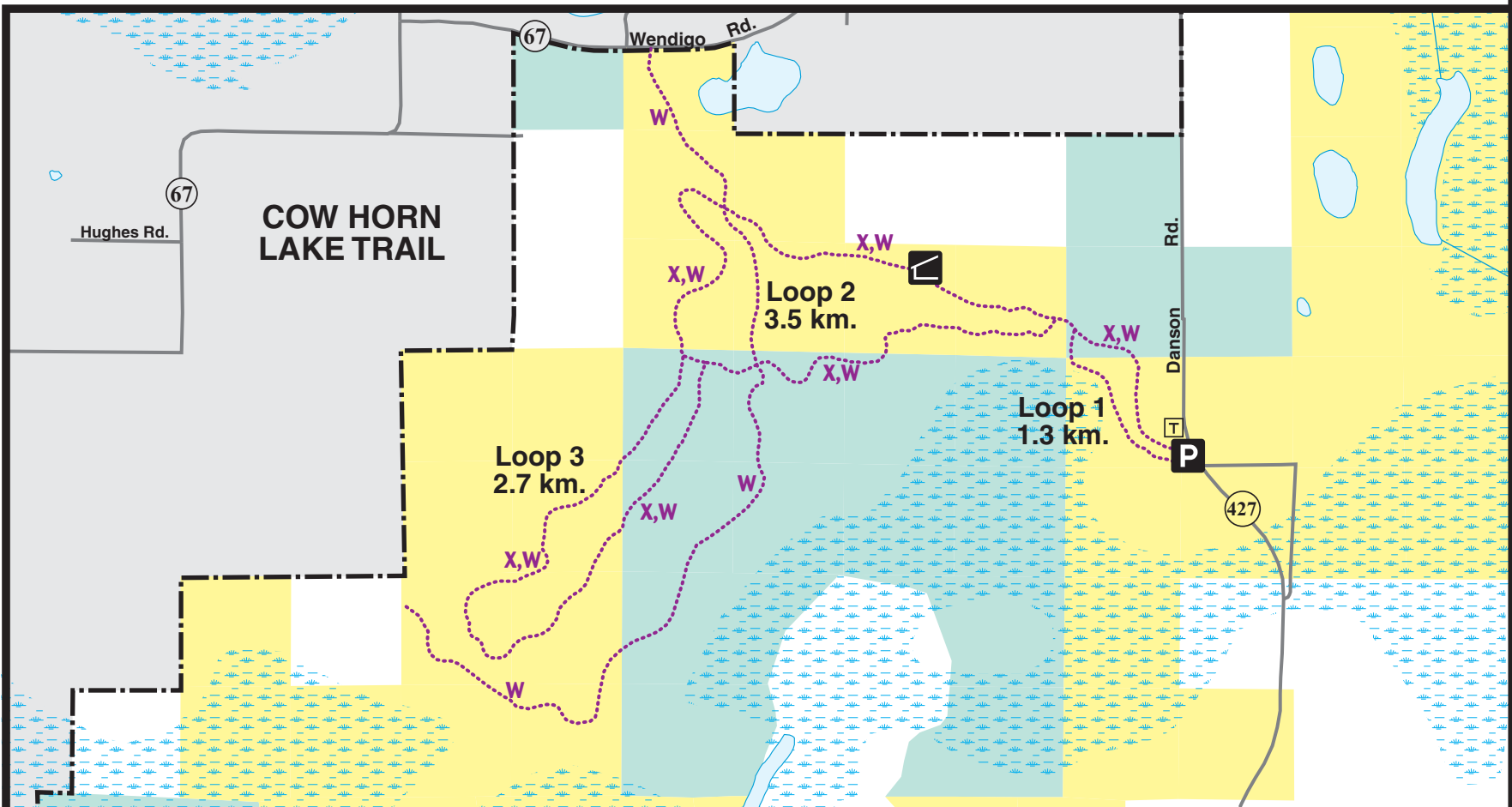
- Parking
- Ranger Station
- Shelter
- Boat Access
- Canoe Access
- Canoe Campsite
- Toilet

OWNERSHIP

- State Forest Land
- Wildlife Management Areas
- Private Land within forest boundaries
- Land outside forest boundaries

TRAILS AND DESIGNATIONS

- Non-Motorized Trails
Ski Touring
Walking/Hiking Trail
- Forest Roads
- Snowmobile Trail



COW HORN LAKE TRAIL

Loop 2
3.5 km.

Loop 3
2.7 km.

Loop 1
1.3 km.

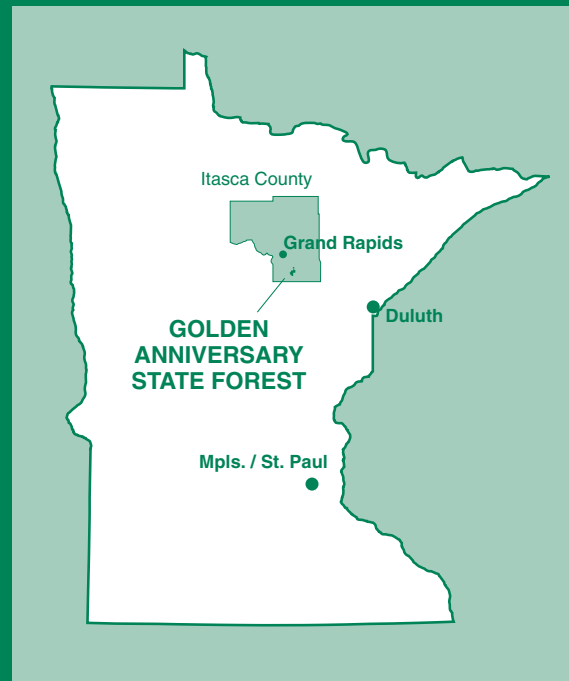
GOLDEN ANNIVERSARY STATE FOREST

TRAIL MAP

COW HORN LAKE SKI TRAIL & RIVER ROAD UNIT SKI TRAIL

Minnesota Department of Natural Resources

This information is available in alternative format upon request.



Printed on recycled paper with 30% post-consumer material.



Golden Anniversary State Forest is located in southern Itasca County about eight miles southeast of Grand Rapids. The forest can be reached by following the Great River Road (Itasca County Road 3) southeast from Grand Rapids. If you are coming from the Twin Cities on State Highway 65, take State Highway 200 to the Great River Road and proceed northwest.

Golden Anniversary State Forest was established in 1961 to commemorate the Golden Anniversary of the Division of Forestry. With gently rolling topography, the forest is a haven for wildlife, with its timber types of aspen, cedar, northern hardwoods, norway and white pine and spruce-fir.

The Golden Anniversary State Forest has a total acreage of 6,811 acres. The Division of Forestry manages 1,810 acres and Itasca County manages 3,287 acres. The remaining acreage is in private ownership.

FOREST MANAGEMENT

Minnesota's 56 state forests were established to produce timber and other forest crops, provide outdoor recreation, protect watersheds and perpetuate rare and distinctive species of native flora and fauna. The Department of Natural Resources applies multiple use management principles to allocate state forest resources to meet the needs of Minnesota citizens. Management actions are

planned to maximize the sustainable yield of renewable resources while maintaining or improving the forest's productive capacity.

Management activities in the Golden Anniversary State Forest include: timber harvesting, timber stand improvement and tree planting. Annually, about 17 acres of aspen, spruce and pine are harvested. A winter deer yarding area is being maintained in an area near Cow Horn Lake. This lake also provides excellent habitat for waterfowl. Special emphasis on timber harvesting to increase ruffed grouse habitat is also an important management activity taking place in the Golden Anniversary State Forest.

STATE FOREST RULES

State forest lands are generally open for all types of outdoor recreation including, hunting, fishing, trapping, hiking, and picking fruit and mushrooms. Rules and laws regulate some activities on forest lands. A partial list is included below. A complete list is available from the Department of Natural Resources.

- Firewood** -Dead wood may be gathered for campfires on site. Cutting or removing wood or forest products for home or commercial use requires a permit.
- Campfires** -Recreational fires of less than 3 ft. diameter, in an area cleared of combustible materials for 5 ft. around the fire, do not require a permit. Other open burning is regulated by permit.

Firearms -Firearms may be discharged in compliance with the law on forest lands that are not posted closed. Firearms must be unloaded and cased while in and within 200 feet of a forest recreation area (campground, day use area, parking area, etc.)

Camping -Camping on forest lands outside of developed campgrounds is permitted with some conditions. See complete rules.

Personal property -Personal property may not be left or positioned so as to obstruct use of a road or trail. Personal property left unattended for 14 days shall be deemed abandoned.

Special rules apply in forest campgrounds and day use areas. They are not included here.

TRAILS -Motor vehicle and off road rules

Classified Forest Lands. State forest lands are classified by the commissioner for purposes of motor vehicle use. Motor vehicle use is regulated as follows:

State Forest Lands Classified as **Managed:**

- Motor vehicles may operate on forest roads and forest trails **unless** they are posted and designated **closed**.

State Forest Lands Classified as **Limited:**

- Motor vehicles may operate on forest roads, **unless** they are posted and designated **closed**.

- Motor vehicles may operate on forest trails or areas that are **posted and designated open**. Trails that are not posted open for motor vehicles are designated as non-motorized.

State Forest Lands Classified as **Closed:**

- Motor vehicles and snowmobiles are **not allowed** except:

* Vehicles licensed for highway use may use forest roads that are not posted or gated closed.

* Vehicles may operate on frozen public waters where it is not otherwise prohibited.

* Snowmobiles may operate on designated trails.

General Operating Restrictions

- anywhere on state forest lands that motor vehicles are allowed.

- No motor vehicle operation is allowed on designated non-motorized trails, unless also posted open for a motorized use.
- No motor vehicle operation is allowed on or over the beds of lakes, rivers or streams except:
 - * when the water body is ice covered.
 - * on a bridge, culvert or designated low water crossing.
- Motor vehicles or snowmobiles may not operate on forest lands in a manner that causes erosion or rutting, damages, or destroys trees or growing crops. The rutting provision does not apply on designated motorized trails.
- Motor vehicles or snowmobiles may not operate within the boundaries of an area that is posted and designated as closed to such use.
- Motor vehicles on state forest roads must travel at a reasonable and prudent speed; obey posted speed limits, parking and traffic regulation signs; observe

road closures; and may not operate in a manner that causes damage to the road, land or other natural resources.

NON-MOTORIZED TRAILS- Trails are generally open to non-motorized uses, but may be limited by postings which must be observed. In the Richard J. Dorer, horses and bicycles may travel only on designated trails.

RECREATIONAL FACILITIES

There are two trail systems in the Golden Anniversary State Forest. The first, called the River Road Unit Ski Trail, is a short 2.8 kilometer loop located 5.5 miles south of Grand Rapids on County Road 3. The second system, known as the Cow Horn Lake Ski Touring and Hiking Trail, is 7.5 kilometers in length and is located off County Road 427, about 9 miles south of Grand Rapids. Both trails are rated beginner to intermediate, and are excellent for family outings in summer and winter.

The Golden Anniversary State Forest and its trails are also open for public hunting and trapping during established seasons.

FOR MORE INFORMATION

Minnesota Department of Natural Resources
Division of Forestry/Information Center
500 Lafayette Road
St. Paul, MN 55155-4040

651-296-6157 (Metro Area)
1-888-MINNDNR (MN Toll Free)
TDD (Telecommunications Device for Deaf)
651-296-5484 (Metro Area)
1-800-657-3929 (MN Toll Free)

Deer River Area Forest Supervisor
Box 157
Deer River, MN 55636-0157
(218) 246-8343

EMERGENCY SERVICES—Dial 911

Law Enforcement
Itasca County Sheriff
Grand Rapids, MN 55744
(218) 326-3477

Nearest Hospital
Itasca Medical Center
126 Southeast First Avenue
Grand Rapids, MN 55744
(218) 326-3401

"Equal opportunity to participate in and benefit from programs of the Minnesota Department of Natural Resources is available to all individuals regardless of race, color, creed or religion, national origin, sex, marital status, status with regard to public assistance, sexual orientation, age or disability. Discrimination inquires should be sent to the Minnesota Department of Natural Resources, 500 Lafayette Road, St. Paul, MN 55155-4031; or the Equal Opportunity Office, Department of the Interior, Washington, D.C. 20240."



© 9/2003 by State of Minnesota, Department of Natural Resources